

GTF-CG

1. Preparation of Road

Fill cracks and depressions, potholes wider than 6 mm. Repair all structurally distressed areas and ensure surface is clean and dry. Badly damaged surface may require milling.

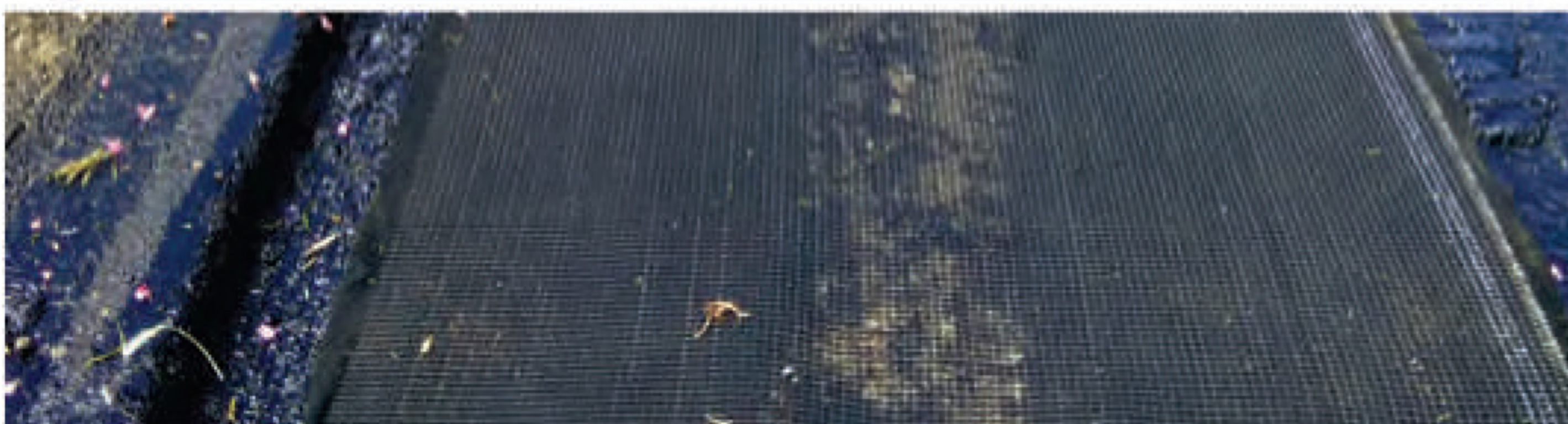
2. Surface Condition of Road

- The prepared surface shall be either an evenly planed milled surface with limited "trough to crest" variance of 0.25" or apply leveling course prior to the installation of Fiber Glass Composite Grid.
- The road surface temperature shall be between 5°C (40°F) to 60°C (140°F).
- Extra care may need to be taken on surfaces less than 24 hours old and warmer than 46°C (110°F), as the mix has not yet solidified sufficiently to hold the material in place.
- Fabric should not be placed if rain is likely during the overlay construction operations.

3. Hot AC Tack (Bitumen) Application

A calibrated distribution truck capable of applying tack at a consistent rate over the pavement surface shall be used. Local environmental conditions may necessitate variation in tack coat type and rate. The actual type of tack and rate shall be determined by the Project Engineer. The application rate is dependent on several factors including existing surface conditions, ambient surface temperatures and the materials' asphalt retention rate of 0.90 l/m² (0.2 gal/yd²). The general recommended rate of distribution shall be 1.13 l/m² (0.25 gal/yd²) with +/- 30% tolerance to accommodate the range of potential surface / environmental conditions.

GTF-CG shall be applied immediately following application of tack coat to achieve appropriate saturation of bitumen into fabric making the product a moisture barrier system.



In as much as Giridhar Techfab Pvt. Ltd. has no control over installation design, installation workmanship, accessory materials, or conditions of application, Giridhar Techfab Pvt. Ltd. does not warrant the performance or results of any installation or use of Fiber Glass Composite Grid. This warranty disclaimer includes all implied warranties, statutory or otherwise, including the warranty of merchantability and of fitness for a particular purpose. The purchaser and/or user should perform its own tests to determine the suitability and fitness of the product for the particular purpose desired in any given situation.

4. Product Storage

Fiber Glass Composite Grid must be stored in a dust-free environment and kept dry at the job site. Fiber Glass Composite Grid must not be transported or stored at temperatures greater than 82°C (180°F).

5. Preferred Laying Method - Using a Fabric Tractor

- Apply tack coat as per project requirements.
- Load roll onto front of tractor. Always load product so non-woven side of fabric is down to facilitate tack absorption. (Adjust timing so some liquid tack penetrates the fabric.)
- Roll **only** with rubber-tired roller. Roller **must** be kept clean.
- Take extra care to minimize wrinkles.
- Any wrinkles larger than 1" need to be slit and lapped in paving direction. Press fabric down into tack coat for proper adhesion.

6. Important Notes

- Workers should wear gloves while handling Fiber Glass Composite Grid, as Fiber Glass Composite Grid is considered a skin irritant product.
- Fiber Glass Composite Grid can be custom cut to fit around structures by using a sharp utility knife.
- Fiber Glass Composite Grid must be applied with minimal wrinkles. Sufficient tension will help to eliminate this problem. Any wrinkles larger than 1" need to be slit and lapped in paving direction. Immediately apply even pressure across the Fiber Glass Composite Grid to set the material into the hot tack coat to ensure saturation of bitumen into the Fiber Glass Composite Grid.
- Fiber Glass Composite Grid does not bend or stretch around curves. Shortened lengths should be placed in these areas.
- Overlap at end of end roll joints 3". Ensure that the overlaps are shingled in the direction of paving.
- Overlap longitudinal joints 3".
- Prior to paving, **only** construction and emergency vehicles should be allowed to drive on installed Fiber Glass Composite Grid.

GTF Private Limited

✉ info@gtf.co.in

🌐 www.gtf.co.in

